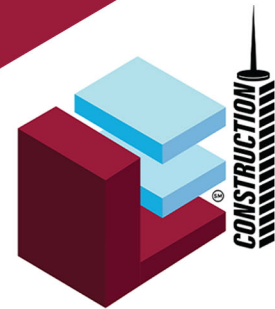


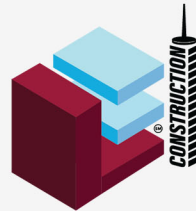


OUR MAIN CLIENTS



LIFE EQUATIONS
CONSTRUCTION INC.
LIC. # 928732
— We Build Relationships —


WE BUILD RELATIONSHIPS




CONTACT US

 www.leconstructioninc.net

 info@leconstructioninc.net

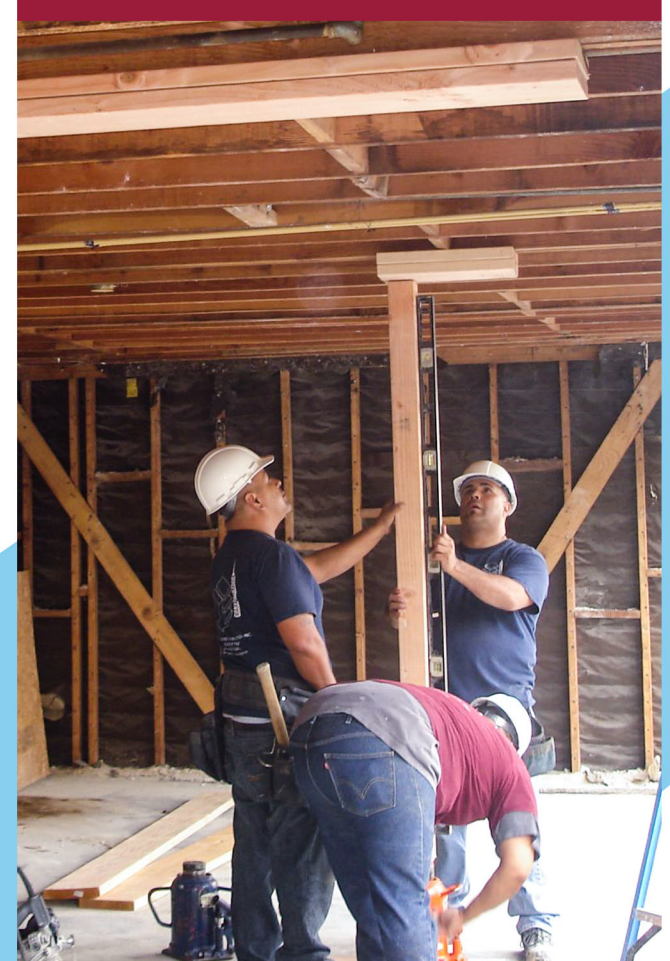
 866-848-0755

 700 E. Birch St. #333
Brea, CA 92822

SERVICE YOU CAN COUNT ON!



BUILD YOUR DREAM



WWW.LECONSTRUCTIONINC.NET

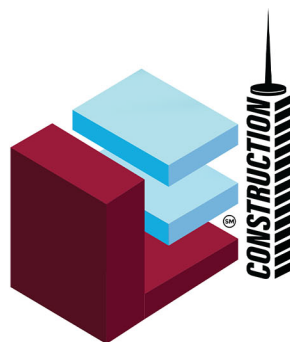
ABOUT US

Life Equations Construction, Inc. is very familiar with the demands and challenges that hotel facilities/hospitality and property management companies are routinely faced with. From various projects (Cap Ex, PIP, etc.) to maintenance and emergency repairs that needed to be done yesterday.

As a result, our construction company specializes in the following services to readily accommodate hotel facilities/hospitality and property management companies throughout California - emergency assistance & support, construction maintenance & repairs, timely bids & material supply and prompt, reliable service.

We pride ourselves in providing excellent, innovative and dependable general construction services while offering very competitive prices. We strive to set ourselves apart from our competition and continue to meet the every day demands of our clients.

We are confident we can become and continue to be your Hotel Facility / Property Management Contractor and added to your list of preferred vendor so we can not only meet your needs, but also enhance and improve your facility/property to keep your occupancy rating high and ensure your guests/tenants are pleased!



LIFE EQUATIONS
CONSTRUCTION INC.
UC. # 928732
— We Build Relationships —



**BUILT ON
EXPERIENCE.
DRIVEN BY
RESULTS.**

OUR QUALITY SERVICES

- ✓ Renovations & Modernization
- ✓ Commercial Property Management Companies + Hospitality / Hotel Facilities
- ✓ General Contracting
- ✓ Swimming Pool & Backyard
- ✓ New Construction To Remodeling
- ✓ HVAC Services

- Framing & Finish Carpentry
- Drywall
- Paint
- Bathtub Repairs & Resurfacing
- Wallpaper
- Waterproofing
- Tile
- Cabinets
- Carpet
- Doors & Windows
- Natural Stone & Artificial Countertops
- Swimming Pool (new design & replaster)
- Plumbing
- Electrical
- Concrete
- Architectural & Engineering
- Stucco
- Fencing
- Block walls
- Landscaping
- And more.....

Is your property looking a bit Outdated?

Let us assist you with making the needed improvement to enhance your curb appeal, increase the value of your property and your occupancy rating.

PAINT SERVICES (EXTERIOR AND INTERIOR)

Upgrade your color scheme and enhance your property instantly with brand new paint and colors.



WOOD REPAIRS

We'll inspect your property for all dry rot and termite damaged wood and replace them as needed to improve your property's appearance and get rid of all those "eye soars".



REFINISHING

- ✓ Tile and Tub Combinations
- ✓ REPELS stubborn mold and mildew.
- ✓ Permanently bonds to bathroom fixtures.
- ✓ Finish won't crack, peel, fade or discolor.
- ✓ Works on fiberglass, too.
- ✓ Is ready to use after 24 hours.
- ✓ ANY color is available.
- ✓ Your bathroom can be resurfaced in as little as one day.



We use only the best products and equipment and maintain a skilled staff to answer your questions. We have built our reputation on our commitment to providing quality service, which has earned us many valuable clients and maintained a long and strong relationship.

